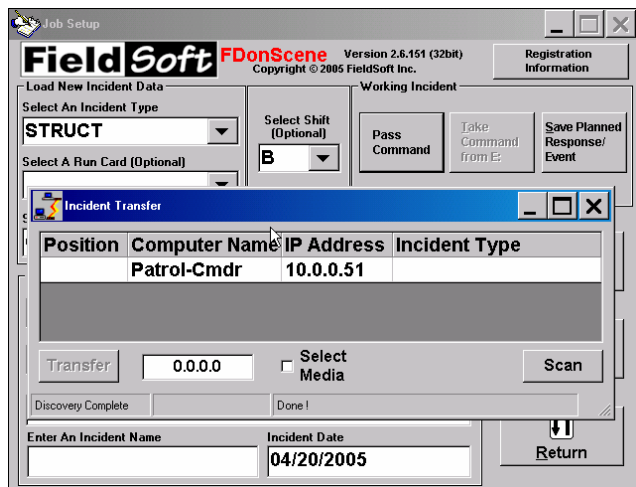


Exchange Resources With A Single Click



FieldSoft

AIMSONSCENE™

P2P (Peer-to-peer) Incident Management Software

**“All Incidents” & “All Agencies”
Software for wired or wireless
local area networks**

AIMSONSCENEP2P is the “right choice” for any organization seeking a faster, simpler, and easier alternative to tactical work sheets, tactical marker boards, and tactical magnet boards. **AIMSONSCENEP2P** is the first and only “all incidents” and “all agencies” capable incident management system software application that includes peer-to-peer capabilities. Fire service, law enforcement, sheriff’s office, corrections, civil support teams, emergency medical service, private sector fire brigades, private sector emergency response teams, and any other type of organization can simply and easily use the NIMS compatible software. The integrated peer-to-peer networking feature lets users exchange incident resources and resource tasking with other team members, in either the command post or area command center. Best of all **AIMSONSCENEP2P** is optimized for real time use by command staff, unlike database driven emergency operations center (EOC) applications suited only for use by dedicated computer operators.

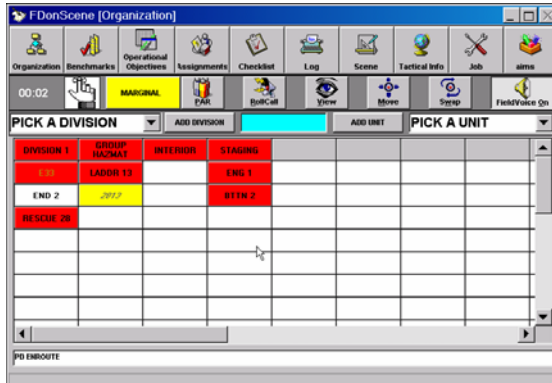
AIMSonSceneP2P Benefits

- Includes all of the features found in FieldSoft’s **AIMSONSCENESU** (single user) software (formerly known as **FDONSCENE** and **PDONSCENE**).
- Simplifies management of complex incidents and “Unified Command” operations.
- Reduces command staff workload through automated features thereby allowing command staff to better focus on incident strategy, incident tactics, and incident hazards.
- Promotes timely and effective decision making since responder, individual resource, hazard, operational objective, resource task assignment, and incident progress information are instantly available at a glance.
- Automatic logging of all events managed through the software provides a detailed record of what happened on scene, when did it happen on scene, and who did it happen to.

AIMSonSceneP2P Features

Incident Organization (Org) Table

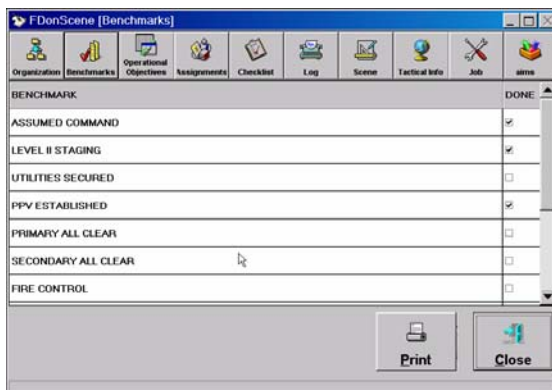
Automatically load divisions and groups (or sectors), resources, and crewmembers on system startup (or add them on the fly). Move, swap, and



track resources. Other Org screen accessible features include benchmarks, operational objectives, assignments, strategy mode, and PAR.

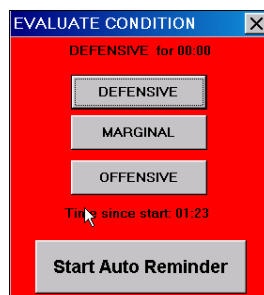
Incident Specific Benchmarks, Operational Objectives, Assignments, And Resources

Each incident type has its own set of user configured data. Select and check off benchmarks as they're completed. Pick operational objectives or assignments from a pick list (or add on the fly), and check them off as they're completed. All activity is logged. A single glance at the computer screen to determine incident status and you're "good to go".



Event Timers

Configure five incident related timers as needed.



Track elapsed incident time or set timers for strategy mode, general welfare, individual resources and a free form reminder. Respond to visual and audible prompts when the timers expire.

Generate Comprehensive Activity Documentation Without Typing

Automated logging creates an incident narrative for



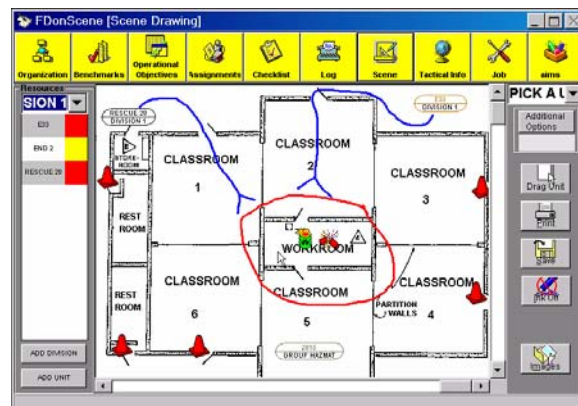
you without any typing. Simply and quickly review any, or all, activities during or after the incident. View or print the log as needed.

Tactical Survey/Pre-fire Plan Wizard Included

Anyone can build a tactical survey or pre-fire plan "web page" comprised of maps, floor or site plans, text, and digital pictures. The information can then be accessed from the tactical information "web site" stored on your computer via your Tactical Browser.

Scene Whiteboard

Display building or map images. "Drag and drop" icons representing resources into position. Mark up the image with the ink function to illustrate graphic features and written notes. Maps and diagrams can then be saved, printed and distributed.



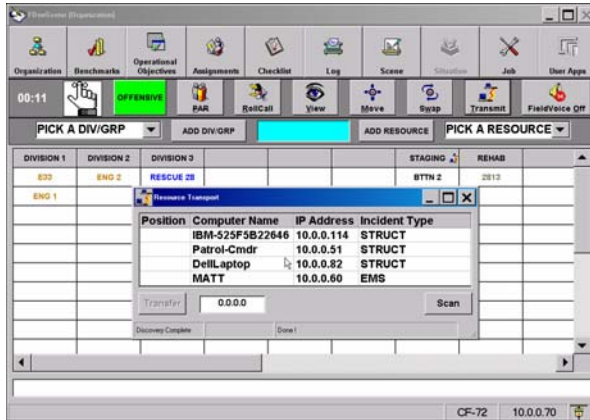
Department Specific Customization

Configure the software to be compatible with your incident command system.

Integrated Tactical Browser

Store graphic or textual information, and easily retrieve it anytime via the integrated Tactical Information Browser.

Peer-to-peer Resource Exchange



Data can be moved from one P2P user to another via nearly any TCP/IP based local subnet including WI-FI or Mesh. Pass command for example, to another P2P user. Likewise, move one or more individual resources, resource tasks, and associated divisions or groups to another member of the command team using **AIMSONSCENE P2P**.

Create And Use "XML" Based Checklists

Create as many checklists as necessary. Open and use one or more during the incident. Save them to the hard disk drive for archival purposes as necessary.

Automated Personnel Accountability/Roll Call

Track responders from arrival on-the-scene through incident termination. Conduct and manage "PAR checks" via the fully automated personnel accountability report (PAR) feature. Use the system "Roll Call" feature to "call the roll" and account for each and every first responder.

General AIMSONSCENE P2P Information

Software License Options

One **AIMSONSCENE P2P** license is required for each computer. A discounted P2P "starter pack" containing two licenses must be purchased first. Additional licenses may then be purchased.

Optional Training Available

An optional training class conducted at your site is available.

Optional Software Support Available

The standard warranty term is 90 days from receipt of the software. Comprehensive telephone or email support is available from the first day, if the optional software support and software enhancement (SSSE) subscription is purchased. Also included with each 12 month SSSE subscription are all software enhancements and upgrades generally released during the term of the subscription. New software releases are available monthly to quarterly.

System Requirements

The **AIMSONSCENE P2P** system requires a wired or wireless TCP/IP local subnet such as a 802.11x WI-FI network or MESH network. Additional computer requirements include an Intel Pentium class CPU (or equivalent); RAM appropriate for the operating system to be used; a 375 megabyte hard disk drive with extra capacity for pre-fire plan or tactical survey information that may be added by the customer; a touch screen, mouse, or trackball pointing device; and Microsoft (MS) 2000, MS XP, or MS XP Tablet operating system software. Software installation requires an internal or external CD-ROM drive.



480/899-2128 www.fieldsoft.com
PO Box 1378, Chandler, Arizona, 85244-1378
U.S.A.

AIMSONSCENE P2P pricing, features, availability, and hardware specifications subject to change without notice. FieldSoft™, **FDONSCENE**™, **PDONSCENE**™, and **AIMSONSCENE**™ are trademarks. All other names are the property of their owners. ©2006 FieldSoft Inc. All rights reserved.